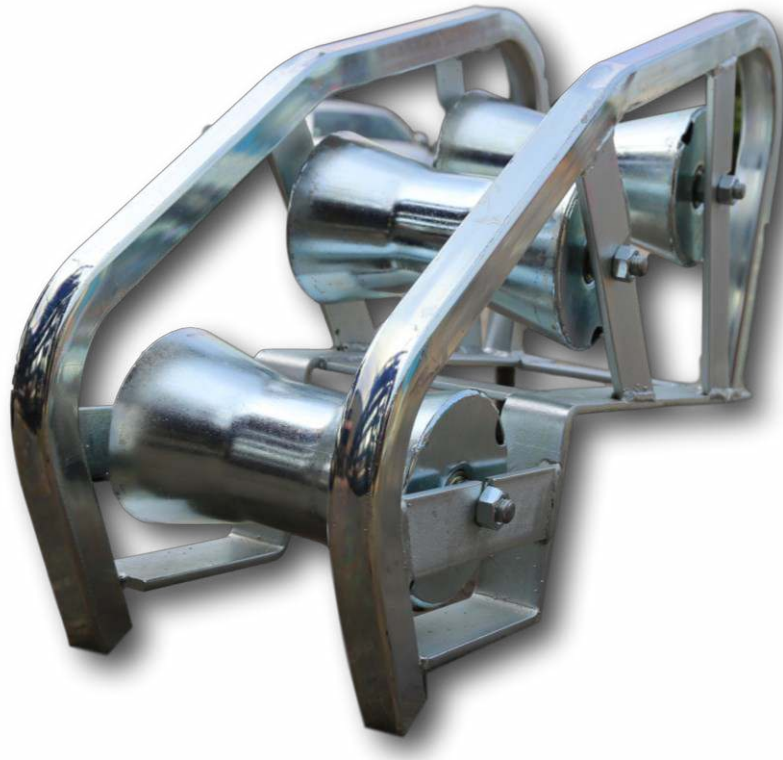


MR4 Edge Mount Manhole Lead In Cable Roller



The MR4 manhole cable roller leads the cable from the drum into the jointbox/manhole or the winch bond out of the manhole. The cable roller is suitable for cables of up to 130mm

- Heavy duty tubular steel construction
- 3 off 110mm diameter steel roller*
- Precision sealed roller bearings fitted
- Zinc plated or powder coated finish
- Size: 57cm long x 21cm wide x 40cm high
- Weight: 10Kg

* The diablo rollers can be substituted with a heavy gauge 89mm tubular steel roller fitted with oil impregnated maintenance free bushes when using the heaviest of cables

TWS are proactive in product development and enhancement and as such the specifications are subject to alteration without prior notice

Trailer & Winch Solutions Ltd, Unit 5, Welsh Croft Close, Kirkby in Ashfield, NG17 8EP
Tel: 01623 752088 – Fax: 01623 880172 – Mob: 07729 967395 – Email: sales@tws-ltd.co.uk